

February 4, 2020



We Are So Glad You're Here!

Welcome to the FWBCC Family

The Fort Walton Beach Community Chorus (FWBCC) "family" shares the love of singing with friends, family and neighbors. We present two shows a year; an original production in the spring and a Christmas show during the holiday season. Our goal is to entertain both children and adults alike through our singing and dancing.

The FWBCC welcomes new members (18 yrs. and older) with an ability and desire to sing and who enjoy having fun. Join us! We know you won't be disappointed!

This newsletter will touch on some of the details that you should know as a member. If you have any questions about our Chorus, please don't hesitate to ask another member, a section leader, or one of our board members. A detailed list of contacts are inside.

To our current members—Welcome Back!

Tech Week!

Sunday, May 10

Move in Day

Mon., May 11

Ensembles @ 5:30 pm

Chorus on stage @ 7 pm

Tues., May 12

Ensembles @ 5:30 pm

Chorus on stage @ 7 pm

Wed., May 13

FULL DRESS RE-HEARSAL!

Chorus on Stage @ 6:45 pm

Thurs., May 14

Ensemble Night -5 pm

Friday., May 15

Show time!

Be on stage @ 6 pm for warm ups!

Sat., May 16

Show time!

Be on stage @ 6 pm for warm ups!

Sun., May 17

Show time!

Be on stage @ 2 pm for warm ups!

**After the show—
TEAR DOWN!**

THE FORT WALTON BEACH
COMMUNITY CHORUS PRESENTS

SONGS THAT BUILT AMERICA



FORT WALTON BEACH CIVIC AUDITORIUM

FRIDAY, MAY 15 @ 7 PM
SATURDAY, MAY 16 @ 7 PM
SUNDAY, MAY 17 @ 3 PM

TICKET PRICES	TICKET OUTLETS
\$15 Adults	Alphy's Catfish House, Navarre
\$10 Children under 18 / Senior Citizens / Military Families	Connect with Flowers, Shalimar
\$9 Groups of 10 or more	Eagle's Nest, Niceville Vintage Barn, FWB

Tickets are available at fwbcc.org/tickets or on our Facebook page.

501(C)(#) Non Profit Organization
All proceeds benefit the FWBCC Memorial Scholarship

SONGS THAT BUILT AMERICA

Our theme for this year's spring show will take us WAY back to the early years of the USA. We will be singing spirituals, folk songs, country music, and of course, patriotic tunes. With Katie's direction and vision for the show, the audience will be on their feet shouting USA! USA!

If you have ideas for ensembles, or want to perform a special number, please speak to Katie! We have an incredibly talented group, so don't be afraid to be a part of the show!

Memorize your music! The last two weeks will be without sheet music!

WE ARE GOING TO CARNEGIE HALL.....AGAIN!!

We have received another invitation to participate in DCINY's (Distiguated Concerts International New York) Carnegie Hall concert of the Messiah! If you would like to participate, a few basic details are listed below. More detailed information about price and payments are on the Facebook Group FWBCC Goes To Carnegie Hall Part Duex! If you plan to go, make sure you join the group to get all announcements regarding the trip.

You must be a member in good standing and participate in the Fall 2020 season.

Final travel dates will be announced after flights are purchased, but plan on leaving Wed., November 25th and returning on Mon., November 30.

The performance at Carnegie Hall will be on Sunday, November 29th.

THE FWBCC BOARD OF DIRECTORS

The FWBCC is a 501(c)(3) nonprofit arts organization. In order to continue to operate, we must have a board of directors. The board is made up of chorus members who volunteer their time and talents to ensure the business side of the chorus runs smoothly and efficiently. We are grateful for those who volunteer, for without them the chorus cannot exist.

Board meetings are held monthly. Dates and times are announced at rehearsals, listed on our Facebook page and on our website.

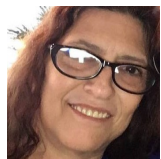
All chorus members are welcome to attend the meetings. Bring your ideas, your willingness to volunteer, and join the discussion. Only the board and the section leaders can vote, but your input is valuable!

MEET YOUR BOARD MEMBERS!

Our board members are dedicated volunteers who are happy to help in any way that they can. If you have any questions or concerns, please seek out a board member **BEFORE** going to Katie (director). The board members and the section leaders are your resource for any chorus related needs.



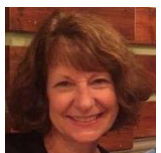
Kim Wolf —President



Regina Carlisle—Vice President



Ministy Holifield—Treasurer



Deborah Bruning—Recording Secretary



Vicki Kreis —Corresponding Secretary

WHAT DO WE NEED?

BUTTS IN SEATS!!

ADVERTISERS!!

SPONSORSHIPS!!

Selling tickets to our shows, asking companies to advertise in our program, and asking people/companies to sponsor our scholarship fund are the ways we raise money to support the cost of our show and to keep money flowing into our scholarship fund. We are a non-profit, so every little bit counts!

Make sure you tell your friends and family about the show! Sell tickets!!

Ask a business that you frequent to buy an ad in our program or to be a sponsor. Sponsors will receive tickets, advertisement, and may write off the charitable contribution on their taxes.

Encourage your friends, family, and associates to come to the show, and to also become sponsors for our scholarship fund.

WE NEED VOLUNTEERS!

There are A LOT of things that need to be done to put on a show. We need your talent, your leadership skills, your able bodies! If you are interested in volunteering, or want to know more about what is entailed for a specific committee, ask a board member!

We have an URGENT need for someone to handle Publicity, Sponsorship, and Ad Sales. Please see your section leader if you are interested in any of these positions. You don't have to do all of the work yourself...grab a friend and work on it together!

SECTION LEADERS

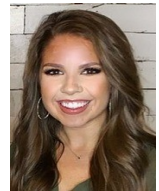
Your section leaders will send you a weekly email with information that you will need for the following rehearsal. There may also be information and dates for upcoming events or singing engagements that the chorus is involved in. Make sure your section leader has your correct email address so you don't miss out on important information and updates.

Please notify your section leader if you are unable to attend a rehearsal. DO NOT go directly to Katie.

Soprano Section Leader

Heather Page

hvhoyos@gmail.com



Alto Section Leader

Nance Koslik

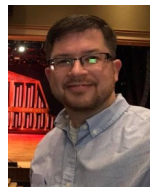
nak1012@gmail.com



Tenor/Bass Section Leader

David Fordham

david.fordham.57@gmail.com



CONCERT AND SPECIAL PERFORMANCE ATTIRE

Chorus members are responsible for purchasing their basic chorus uniforms and other items as required. The board will ensure that no member is burdened with heavy expenses for uniforms. Payment for chorus attire is the responsibility of each member and must be prepaid before ordering unless other arrangements are made with the costume committee.

FORMAL ATTIRE

Ladies

A BLACK CONCERT DRESS will be worn for a portion of most of the shows' performances. The dress may be purchased for \$62.00 (dress may require hemming at the member's expense). If earrings are worn, they must be small PEARL EARRINGS, either stud or button style. BLACK CLOSED-TOE SHOES, heels (no more than 2 inches high) or flats, will be worn. BLACK panty hose or knee highs and proper undergarments (camisoles and long slips) will also be worn.

Men

It is advisable to have a BLACK JACKET/SUIT COAT even though it is not always worn. Additionally, you will need BLACK DRESS PANTS and a WHITE DRESS SHIRT (plain, long sleeve, button up, button down collar, preferred). A WHITE UNDERSHIRT, BLACK DRESS SHOES and SOCKS are also required. Men must purchase a BLACK CONCERT VEST AND TIE. (\$36.00)

Black dresses for ladies and black attire for men will be ordered/paid for (or payment arrangements made) by the sixth week of rehearsals to ensure enough time for hemming and alterations.

STANDARD ATTIRE

Ladies

BLACK DRESS PANTS (no leggings or stretch pants) and a WHITE SHIRT (plain, long sleeve, button up with collar, similar to men's dress shirt) are worn often in shows and other performances. Refer to formal attire guidelines concerning jewelry and footwear.

Men

BLACK DRESS PANTS and a WHITE SHIRT are worn with or with a black tie. Refer to formal attire guidelines concerning footwear.

Blue Chorus Shirts

Chorus members, both male and female, who plan to perform with the chorus at various events around the area will need to purchase a blue chorus shirt. (has FWBCC emblem on it). Please see your section leader for order information.

COSTUMES

Each member will be responsible for his/her own ensemble costume(s). Our storage facility will be available on "costume and staging day" for any chorus member needing additional items for ensembles.

DUES

Chorus Dues are \$25 per year and are to be paid in full within 30 days from the first day of rehearsal at the beginning of the fiscal year (January).

Seasonal singers, with prior Board approval, are required to pay the reduced amount of \$15.

Prorated dues will only be accepted if a totally new singer is accepted before the cut off date for the second concert.

MUSIC & REHEARSALS

Sheet Music

A significant expense for the chorus is sheet music, most of which is copyright protected. A \$50 music deposit will be required. This deposit allows the member to take the music packet home. Without a music deposit, the music packet cannot be taken home. The checks/cash will not be deposited into the chorus' bank account unless the music packets are not returned. Music packets must be returned before the season's last performance in the collection box provided in the auditorium.

- All music remains property of the chorus.
- A chorus member is assigned a packet of music by number at the first rehearsal.
- Members are responsible for their music, both for maintaining its condition and replacement, if lost.
- When marking, please use a soft lead (#2 or under) pencil.
- Please erase all marking before returning the music packet.

Rehearsals

There are always going to be rules, right? Unfortunately, it is a fact of life. These are rules that will help keep everyone safe, happy, and **prepared**.

Please be on time for rehearsal. Rehearsal begins promptly at 7:00 pm for the first five rehearsals. Thereafter, rehearsals begin between 6:30-7 pm depending on the ensemble rehearsal schedule. Please refer to the weekly update email from your section leader for the rehearsal time of each ensemble.

More than three absences from rehearsals could warrant a discussion with director concerning participation in the current show. Please make sure you let your section leader know if you will not be able to attend a rehearsal.

No gum, candy, food, or drink is allowed in any rehearsal space. Only water is allowed. Water bottles must have caps that close so water doesn't spill if they fall over.

For insurance/liability purposes, children are not permitted to attend rehearsals or during tech week at the auditorium.

Consumption of alcoholic beverages is prohibited in any location where we rehearse or perform. Failure to follow this guideline will result in you being asked to leave the rehearsal/event and your membership will be revoked.

OUR HISTORY

The FWBCC was formed in 1975 by founding Director, Steve Johnson along with 50 energetic and spirited singers from local communities. The inaugural choral engagement, the *Testament of Freedom-Writings from Thomas Jefferson*, was held at Lion's Park on Bayshore Drive in Niceville, FL. Since then the FWBCC has produced spring and Christmas concerts each year blending patriotic, contemporary and musical Broadway numbers.

After 40 years the chorus has entered a new era. Our director, Katie McGuire Menges (pictured below), began directing the chorus in August 2015. We have a cast of long-standing and newer members who are dedicated singers and performers. Our objective is to continue to provide quality and enjoyable entertainment to everyone.



MUSIC & REHEARSALS, CONT'D

Ensembles

Ensembles will be selected by the fifth rehearsal. The director will assign ensembles based on need and interest. A director appointed ensemble leader is responsible for updating the director of any participation, attendance, and staging/costume support needs. Ensemble participation is at the directors discretion. Ensemble music will be memorized two weeks before tech week.

Chorus Property

All chorus property will be stored at TSC Productions storage facility. This includes, but is not limited to, costumes, music, staging items, props, chairs, etc. Members must provide a four day notice to TSC Productions for access to the facility.

Reimbursable Expenses

All purchases must be approved by the board. Purchases under \$50 require approval from the president and treasurer prior to purchase. Purchases over \$50 require full board approval prior to purchase.

Fort Walton Beach Community Chorus

Primary Business Address
PO BOX 2221
Fort Walton Beach, FL
3249

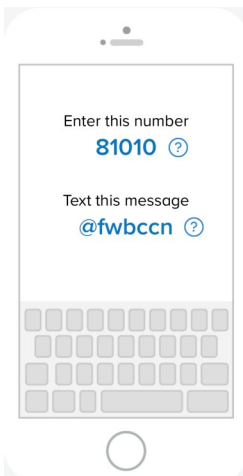
E-mail: fwbcc1975@gmail.com
Website: fwbcc.org



STAY INFORMED



Get this app! We use this app to communicate upcoming events/gigs/important information.



Like & Follow Us!
Announcements and important information will be posted on our Facebook page.

FWBCC MEMORIAL SCHOLARSHIP

The FWBCC Memorial Scholarship was established in 1993 and is dedicated to the numerous chorus members who have passed before us. Just as music was a large part of their lives, this meaningful scholarship will continue the musical experience and education of recipients pursuing what our members cherished dearly...the love of MUSIC!

The FWBCC has raised additional funds from donations and ticket sales to provide at least two monetary scholarships to Okaloosa and Santa Rosa County graduating seniors who will be furthering their musical education. Scholarships in excess of \$34,000 has been gifted thus far.

OUR MISSION

- ◆ To establish and maintain a tradition of choral excellence
- ◆ To promote and stimulate a knowledge of, and appreciation for music throughout the community
- ◆ To present performances of choral literature accompanied and unaccompanied, secular and sacred, of general interest to the community
- ◆ To provide a challenging and rewarding experience for our members through active participation in rehearsals, performances, and related social activities
- ◆ To raise funds for the FWBCC Memorial Scholarship Fund

